

Date de citometrie in flux privind modificarile aparute in progresia ciclului celular

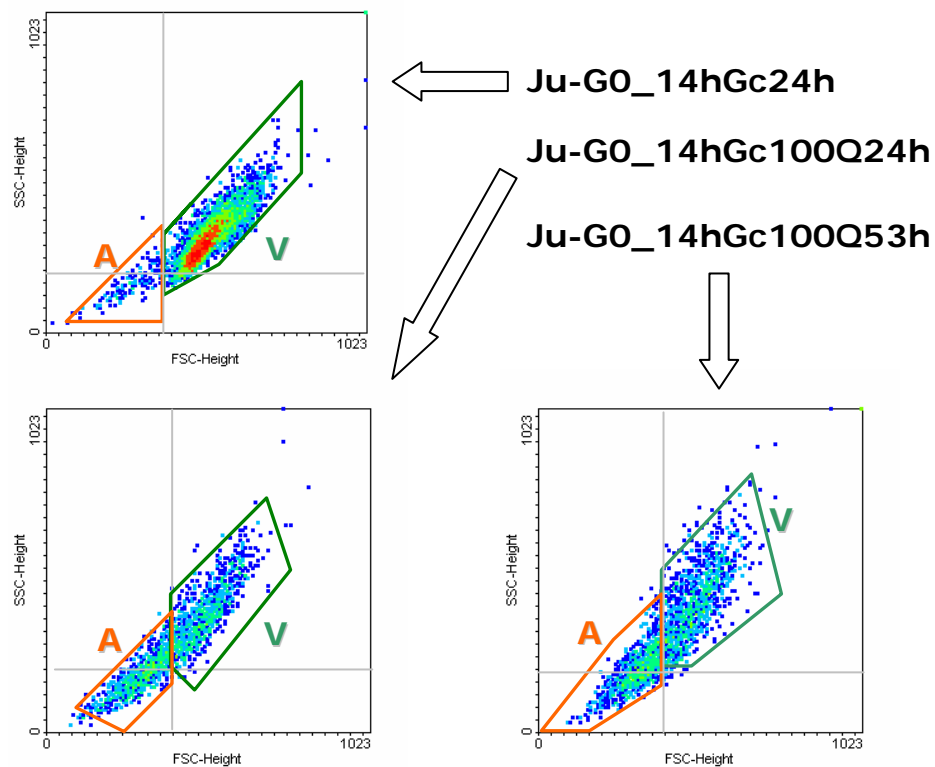
Citometru in flux Becton Dickinson FACS Calibur			
Soft de Achizitie: CellQuest			
Soft de prelucrare: WinMDI 2.8 si Cylchred			
Analiza de ciclu celular			
23.08.2006			
Tampon de colorare PI/RNase (Iodura de propidiu/Rnaza)			
BD Pharmingen 550825			
	Probe fixate in 70% EtOH		Viabilitate orientativa*
1	1/060806	Ju-GO_14hGc24h	98.10%
4	4/060806	Ju-GO_14hGc100Q24h	97.58%
15	3/070806	Ju-GO_14hGc53h	94.92%
18	6/070806	Ju-GO_14hGc100Q53h	59.09%

Gc - mediu RPMI complet, suplimentat cu 2mM glutamina, penicilina/streptomicina si 10% ser fetal bovin

GO - mediu RPMI fara ser fetal bovin

100Q: 100µM Quercetina in mediu RPMI complet

* - determinata prin metoda excluderii colorantului albastru de tripan



Odata cu timpul de expunere la quercetina creste populatia de celule ratatinate; aparitia lor precede permeabilizarea membranei plasmatice